

April
2026

Ikeda City
Certified Kodomo-en
(Education class)

ADMISSION INFORMATION



Application date : Oct.1, Oct.2, Oct.3, 2025

Public proxy lottery : Oct.10, 2025

(Attendance is
not required)

Kindergarten type

Sakura

Kindergarten type

Aozora

Kindergarten cooperation type

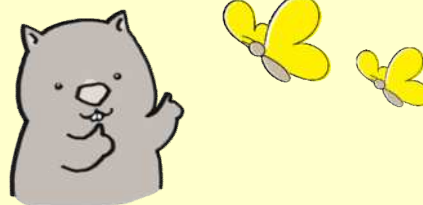
NaKayoshi

Kindergarten cooperation type

Hikari

Ikeda City / Ikeda City Board of Education

Facility introduction



Sakura Kindergarten



Daiwacho 1-4 (072-751-3513)
We raise children who are mentally rich and can act independently.



Aozora Kindergarten



Hata 1-1-1 (072-751-9554)
We raise children who learn in playing, grow up together, and are rich in spirit.



Nakayoshi Kodomo-en



Ishibashi 4-6-1 (072-761-6751)
We raise children who are healthy both physically and mentally, and who are motivated and rich in spirit.



Hikari Kodomo-en





Koda 2-4-1 (072-752-0414)
We raise children who are mentally and physically healthy, have the strength to live, and are rich in spirit.



Application Requirements



About admission procedure

Facility		Sakura	Aozora	Nakayoshi	Hikari
Qualification		Ikeda citizens born during the following period; ● 3 year olds : April 2, 2022 ~ April 1, 2023 ● 4 year olds : April 2, 2021 ~ April 1, 2022 ● 5 year olds : April 2, 2020 ~ April 1, 2021			
Number	3 year	20	26	No recruitment	
	4 year	0	4	18	16
Date		October 1 (Wednesday), October 2 (Thursday), October 3 (Friday) 2025			
Application form		 【For Sakura/Aozora】 https://logoform.jp/f/xg0Tl		 【For Nakayoshi/Hikari】 https://logoform.jp/f/XUPg3	
Department in charge		【About admission procedure】 School Management Division (Ikeda City Hall, 5th Floor) TEL : 072-754-6291		【About admission procedure and child development】 Day Nursery Division (Ikeda City Hall, 4th Floor) TEL : 072-754-6208	
		【About child development】 Education Policy Planning Division (Ikeda City Hall, 5th Floor) TEL : 072-754-6294 If you require Special Needs Education for your child, please contact us by September 12 (Friday) .			
If you require Special Needs Childcare for your child, please contact us by September 16 (Tuesday) .					

※For information on admissions during the year and recruitment of 5-year-old children available, please contact the department in charge of admission procedures.

※If you would like to apply on paper, please contact the department in charge of admission procedures.

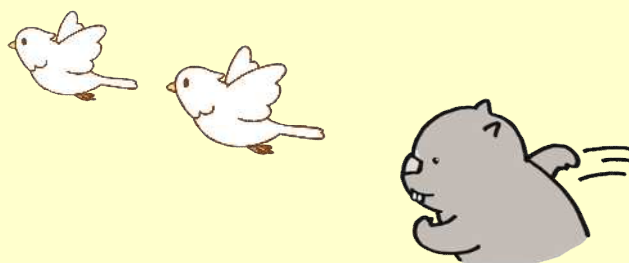
About public proxy lottery

Content	If the number of applicants exceeds the capacity, a lottery will be held on behalf of city staff. Please attend <u>only if you wish to see the lottery process.</u>
Date	October 10 (Friday) 2025 2:00pm (Doors open at 1:30pm)
Place	Central Community Hall, 2nd Floor "Conference room A" (1-1 Sugawaracho, Ikeda City)
Belongings	If you applied on electronically, please present the transmission completion email. If you applied on paper, please bring "Admission application form reception form".
Other	●The lottery will be held in the order of Sakura, Aozora, Nakayoshi, and Hikari. ●Information on whether there will be a lottery will be announced on the Ikeda City website on October 6 (Monday). ●Depending on the developmental state of the child, certain consideration may be given in the lottery. ●The result of the lottery will be posted on the Ikeda City website on October 10 (Friday) 7:00pm. ●Depending on the lottery results, the necessary documents will be mailed at a later date.

※You can enter and leave the room at any time.

※Please do not contact Central Community Hall regarding the lottery.

Information



Basic information

Operating time	7:00am to 7:00pm (Education class : Monday to Friday)
Class time	9:00am to 2:00pm (Monday to Friday)
Providing meals	School lunches are provided 5 times a week. (Some days you may need a lunch box)
Expenses	Childcare Free during class time / For other time, see "Out-of-class childcare"
	Others Standard clothes (Sakura and Aozora only), activity clothes, school lunch, etc. (Please contact the facility for details)

Out-of-class childcare

Period	Usually		Exception	
Date	●Monday to Friday (A day with class)		●Spring vacation ●Summer vacation ●Winter vacation (excluding year-end and New Year holidays)	
Time	7:00am to 9:00pm After class to 7:00pm		7:00am to 7:00pm	
Fee	① Temporary use		③ Long-vacation use	
	Times	Fee	Times	Fee
	7:00am to 9:00am	400 yen per 30 min.	7:00am to 9:00am	400 yen per 30 min.
	After class to 5:00pm	750 yen per day		
	5:00pm to 7:00pm	400 yen per 30 min.	9:00am to 2:00pm	500 yen per day
	② Registered use		9:00am to 5:00pm	1,250 yen per day
	Times	Fee		
	After class to 5:00pm	12,000 yen per month	5:00pm to 7:00pm	400 yen per 30 min.
Others	●If Day Nursery Division deems childcare to be necessary, part of the out-of-class childcare fee will be reduced. ●The upper limit for out-of-class childcare fees in August is 20,000 yen. ●If your child attends classes during summer vacation, the after-class fee will be ① or ②.			



About Certified Kodomo-en (education class)

- Sakura, Aozora, Nakayoshi and Hikari are "Certified Kodomo-en", that have advantages of both kindergarten and nursery school.
- You will receive comprehensive instruction tailored to each child.



Kindergarten bus (Sakura and Aozora only)

Fee	3,000 yen per month (excluding August)	
Bus stops	Sakura	Aozora
	① Momozono Community Hall	① Japan Ikeda Hachizuka store
	② West side of Kureha Elementary School	② Hachioji 1 Bus stop
	③ Next to Richo	③ Teshima-Kita Community Hall
	④ Koda Elementary School	④ Kita-Imazaike Bus stop
	⑤ Uho Community Hall	⑤ Lawson Ikeda Tenjin 2 store
	⑥ Alvis Ikeda	⑥ Hachizuka Post Office
	⑦ Kureha-jinja Shrine (Satsukigaoka 1)	⑦ Old Elderly Welfare Center
	⑧ Yokooka Park (Satsukigaoka 2)	⑧ Shochiji Temple
	⑨ Shibutani Junior High School (main gate)	⑨ Midorigaoka Bus stop
	⑩ Satsukiyama Gymnasium	⑩ Ishizumi Bus stop
		⑪ Higashi-Hata Park
		⑫ Hata Community Hall

※Bus stops and routes may change depending on the number of passengers, etc.

※Details such as boarding times for each stop will be explained by the facility after admission is decided.



Growing vegetables



Creative activities



Playing in the mud



Sports day

Develop the foundation of your ability to live a fulfilling and strong life.

- We encourage children's growth and help them acquire the habits necessary for daily life.
- We value connections between people and develop children's communication skills.
- We value experiences and foster compassion in children.
- Develop children's ability to express their experiences and ideas.

Annual events

1st semester

- Entrance ceremony
- Health check
- Traffic safety class
- etc.

2nd semester

- Sports day
- Art exhibition
- Life presentation
- etc.

3rd semester

- Setsubun
- Farewell party
- Graduation ceremony
- etc.

Others

- Birthday party
- Evacuation drills
- English activities
- etc.

● There are various other events as well.

● The implementation period may differ depending on the facility.



Sakura Kindergarten

【1st admission information session】

October 31 (Friday) 2:00pm



Aozora Kindergarten

【1st admission information session】

November 5 (Wednesday) 9:45am



Hikari Kodomo-en

【1st admission information session】

October 30 (Thursday) 2:00pm



Nakayoshi Kodomo-en

【1st admission information session】

October 31 (Friday) 1:30 pm

● Details of the admission information session will be sent to those who have decided to enroll.