

いけだくらしのじょうほう

池田くらしの情報

Laporan berkala kota ikeda dalam berbagai Bahasa

Thông tin về cuộc sống tại thành phố Ikeda

Languages English

【Events at Ikeda Diversity Center(IDC)】

○Nihongo Cafe

Days and time Every Tuesday ,Wednesday and Thursday mornings from 10am to 11:30am (excluding holidays)

Details Interacting in Japanese with volunteers.

Target Foreign citizens



○OTBY "To Be Yourself" Project – A place for children with foreign roots

Day and time Every Saturday mornings from 10am to 11:30am (excluding holidays)

Details The place for children to socialize. Staffs support children with Japanese studies and homework from school

Target Elementary and junior high school students with foreign roots

Capacity 5 children

★Distributing of sanitary goods

We are distributing sanitary goods for those who can't buy them for some reasons. Ask for the Diversity Center window.



池田市ダイバーシティセンター

池田市 ダイバーシティセンター



☎ 072-735-7588

Ikeda-city
Diversity
Center



✉ idc@city.ikeda.osaka.jp



Ikeda Satsukiya Sakura Cherry Blossom Festival

Satsukiya is known as one of the most famous cherry blossom spots in the northern part of Osaka area. Cherry blossoms Someiyoshino and Yamazakura bloom everywhere from the entrance of Satsukiya Park to the summit.

Please enjoy these blossoms at the annual "Ikeda Satsukiya Sakura Festival".

You can have a cup of tea while listening to the sound of the koto or shamisen.

Date: April 6 (Sat), 7(Sun), from 10 a.m. to 3 p.m.

Venue: Ikeda Castle Ruins Park

Contents: Citizen's tea ceremony event (500 yen, held in case of light rain),

Japanese music concert (canceled in case of rain)

Contact: City Promotion Publicity Division ☎072-754-6244



Build Ishibashi handai-mae together

~Imagine if Ishibashi-ekimae Park was a grass field~

The social experiment event will be held by the "Town Development Association", which is working on the development of the surrounding town of Hankyu "Ishibashi handai-mae Station" through public-private partnerships.

This is a child-themed event, making new connections and Ishibashi handai-mae attractive.

Please come and visit us.

Date: March 24 (Sun), from 10 a.m. to 3 p.m. (cancelled in case of rain)

Venue: Ishibashi-ekimae Park

Contents: Installation of grass field, workshop competitions, food and drink booths, etc.

* For details, please see the Ishibashi handai-mae Station Area Community Development Council Instagram.

Contact: Urban Policy Division ☎: 072-754-6262



Ikeda Expo

[Sakura Green Marche]

Date: March 30(Sat), 31(Sun), from 10 a.m. to 8 p.m. (until 4 p.m. on 31st)

Venue: Satsukiya Park, Ikeda Ekimae Park

Contents: greenery and art, handmade, kitchen cars, food stalls, etc.

[EXPO Special Lecture]

Date: March 30 (Sat), from 1p.m to 3 p.m.

Venue: Central Community Hall

Contents: Lecture by the director Tatsuro Shirai, Expo collector and Expo enthusiast Atsushi Futakami

[Expo 70's Collection Exhibition]

Date: March 30 (Sat), 31(Sun), from 10 a.m. to 5 p.m.

Venue: Central Community Hall

*For details, please see the City Green Marche website.

Contact: Ikeda Green Marche Executive Committee Koda ☎090-1952-5097

Midori Agricultural Policy Division ☎072-754-6686



○ Notice of end of free vaccination of the new corona vaccine ○

Special temporary vaccination will end on March 31, 2024 (Sun)

* This information is as of February 6 (Tue), 2024.

For more and the latest information, please visit the city's website

Vaccination fees will be charged after April 1, 2024. In late March, near the end of the year, medical institutions may be crowded. If you would like to be vaccinated, please consider getting vaccinated as soon as possible. Your vaccination ticket and pre-examination slip will be available until March 31, 2024. Please discard any items that you have not used after that. The vaccination certificate app and the issuance of the vaccination certificate at the convenience store will be also discontinued after the date.



○ Support Benefits for Measures against Rising Prices ○

Benefits will be provided to households that have a significant impact on household budgets due to soaring prices.

Venue: 7th floor of City Hall (1st floor until March 29, Fri)

[Benefits to households that are taxed only on per capita rate of resident tax]

○ Eligible households ○

Households that are residents-registered of Ikeda as of December 1, 2023

and whose inhabitant tax of all households of Reiwa 5 falls on (1) or (2) below:

(1) Consisting of tax payers who pay only per capita rate

(2) Consisting of tax payers who pay only per capita rate and exempted from paying per capita rate.

〈Households not eligible〉

○ All members of the household are dependent on other relatives who are subject to resident tax.

○ There are persons who are exempt from resident tax due to the application of exemptions under tax treaties.

○ Amount of benefits: 100,000 yen per household

○ Procedures

Documents related to benefits will be sent sequentially to eligible households from late March.

○ Payment period

Payment will be made sequentially from late April.

*For details, please see the city's website.

[Benefits for low-income households raising children]

○ Eligible households

Households that are residents-registered in Ikeda as of December 1, 2023 and whose residents' tax of Reiwa 5 is (1) or (2) below:

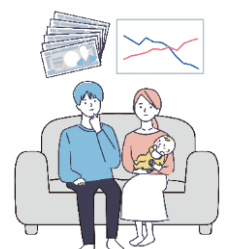
(1) exempted from per capita rate tax

(2) only per capita rate is taxed

○ Children eligible for benefits

Children under the age of 18 (born on or after April 2, 2005) in the same household

* Children who are dependent in another household may also be eligible (application required).



- Amount of benefit: 50,000 yen per child
- Procedures

Documents related to benefits will be sent:

- (1) to per capita rate tax exempt households from early March
- (2) to households that are taxed only per capita rate from late March

- Payment period

Payments will be made sequentially,

- (1) to per capita rate tax exempt households from late March
- (2) to households that are taxed only per capita rate from late April

*For details, please see the city's website.

Inquiries: Special Counter for Support Benefits for Measures against Rising Prices

☎072-754-6611



○Let's use the "Osaka Disaster Prevention App"○

In addition to weather advisories and warnings, earthquakes, tsunamis, and typhoons for Osaka Prefecture and municipalities, a variety of disaster prevention information such as heat stroke, linear precipitation zones, and evacuation information from local governments are provided in this application.

In addition to being able to check the situation of normal rain clouds, hazard maps in case of emergency, and routes to shelters of a disaster, you can receive disaster prevention information of your current location anywhere in the prefecture via push notifications using the GPS function of your smartphone. Please make use of the Osaka Disaster Prevention App. Japanese, Easy Japanese, English, Chinese, and Korean are available.

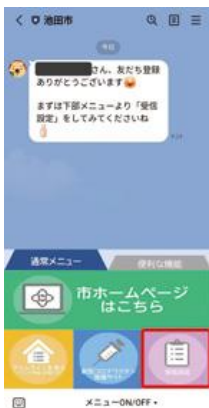
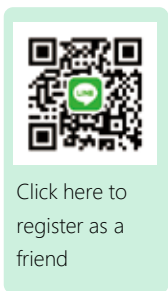
Inquiries: Prefectural Disaster Countermeasures Division ☎: 06-6942-9174



○ Have you set up to receive Ikeda City's official LINE? ○

Ikeda City's official LINE distributes a variety of information such as city politics, disasters, and events. From this fiscal year, we have added a "reception settings" function that allows you to set your own interests and receive only the information you want.

Please note that if you have not set it, you will not receive messages except for some information.



① Turn on the menu and select the reception settings.



② Select the information you need



③ You will receive only the information you need on LINE.